

Attacco entrata prodotto
Connection to product inlet

Foro di verifica tenuta
Testing hole

Uscita prodotto
Product outlet

ESECUZIONE CORPO VALVOLA BODY VALVE EXECUTION

ENTRATA INLET FLOW	USCITA OUT FLOW
A saldare (ESD) weld connection (ESD)	Clamp BS (UTC) clamp BS (UTC)
A clamp BS (ETC) clamp BS (ETC)	A saldare (USD) weld connection (USD)
Attacco ING ingold ING ingold connection	Portagomma (UPG) Rubber hose (UPG)
Altre esecuzioni a richiesta Other options upon request	Luer (ULR) Luer (ULR)

FINITURE

SURFACE FINISH

Esterno lucido specchio
Interno Ra <0,4 micron
Outside mirror polished
Inside Ra <0,4 micron

AS2 M

CONDIZIONI MAX DI ESERCIZIO

AS2

MAX WORKING CONDITIONS

Temperatura / Temperature
-30°C a +150°C

Portata / Flow rate
1400 Lt/h a 2 bar

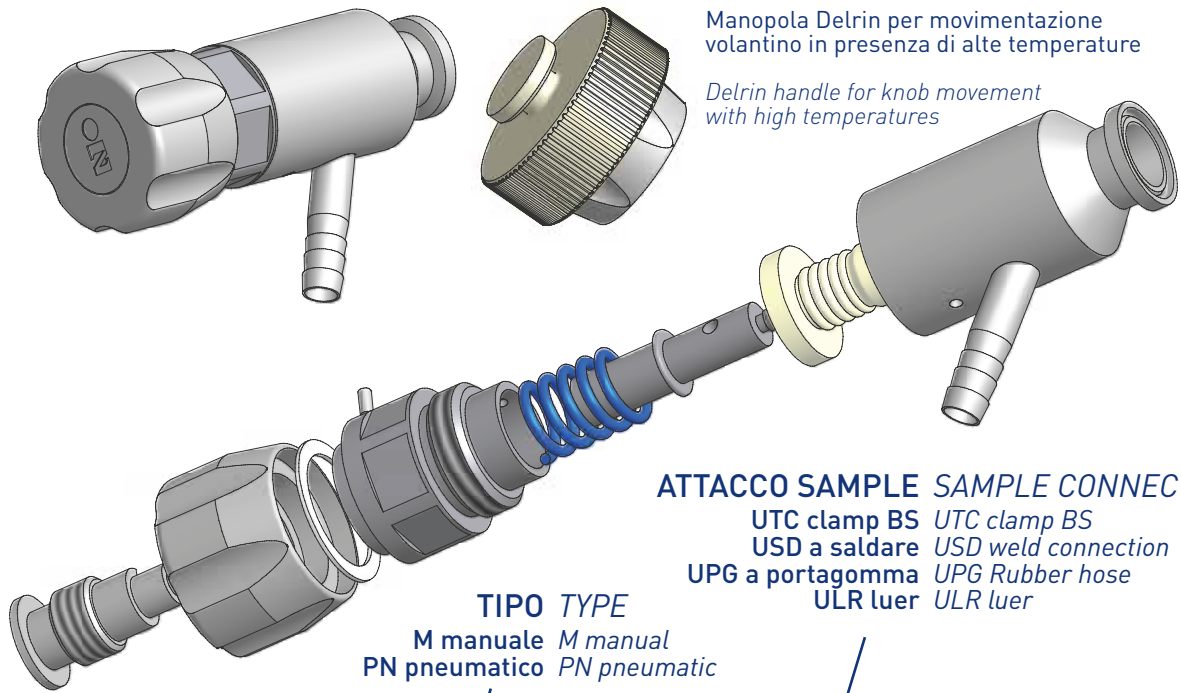
Pressione nominale / Nominal pressure
Pn 10

Esecuzioni e connessioni speciali
su richiesta

Special executions and connections
upon request

Elenco parti / Parts list

Elemento Element	Qtà Quantity	Descrizione Description	Materiale Material
1	1	Corpo / Body	AISI 316 L
2	1	Membrana / Diaphragm	TFM 1705 PTFE
3	1	Tampone / Plug	AISI 303
4	1	Testata / External body	AISI 303
5	1	Volantino / Handwheel	Bronzo nichelato Nickel plated brass
6	1	Rondella / Washer	TEFLON
7	1	Albero / Stem	AISI 303
8	1	Spina / Pin	INOX A2
9	1	Molla / Spring	Acciaio per molle Spring steel



Manopola Delrin per movimentazione
volantino in presenza di alte temperature

Delrin handle for knob movement
with high temperatures

ATTACCO SAMPLE SAMPLE CONNECTION

- UTC clamp BS UTC clamp BS
- USD a saldare USD weld connection
- UPG a portagomma UPG Rubber hose
- ULR luer ULR luer

TIPO TYPE

- M manuale M manual
- PN pneumatico PN pneumatic

AS2 / ... / ... / ... / ... -P

CODICE DI ORDINAZIONE
ORDER CODE

ATTACCO VAPORE STEAM CONNECTOR

- VTC clamp BS VTC clamp BS
- VSD a saldare VSD weld connection
- VPG a portagomma VPG rubber hose

ATTACCO CORPO BODY CONNECTORS

- ETC clamp BS ETC clamp BS
- ESD a saldare ESD weld connector
- EGM filettato EGM UNI 338 thread
- ESW whitworth ESW whitworth
- ING ingold ING ingold

*Materiale in alternativa 1.4435

*Material alternatively 1.4435

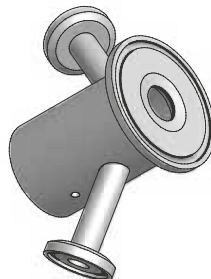
ESEMPI / EXAMPLES



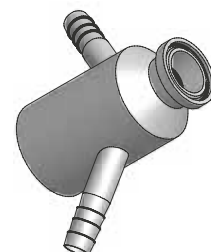
Attacco ETC
Uscita USD
Attacco vapore VSD
ETC connector
USD out
VSD steam



Attacco ETC
Uscita UTC
ETC connector
UTC out



Attacco ETC
Uscita UTC
Attacco vapore VTC
ETC connector
UTC out
VTC steam



Attacco ETC 3/4"
Uscita UPG
Attacco vapore VPG
ETC connector 3/4"
UPG out
VPG steam

