

>PUMPS

PRG SERIES

MAINLY USED IN INDUSTRY.

These pumps boast heads and flow rates usually comparable to bulkier and more expensive models.

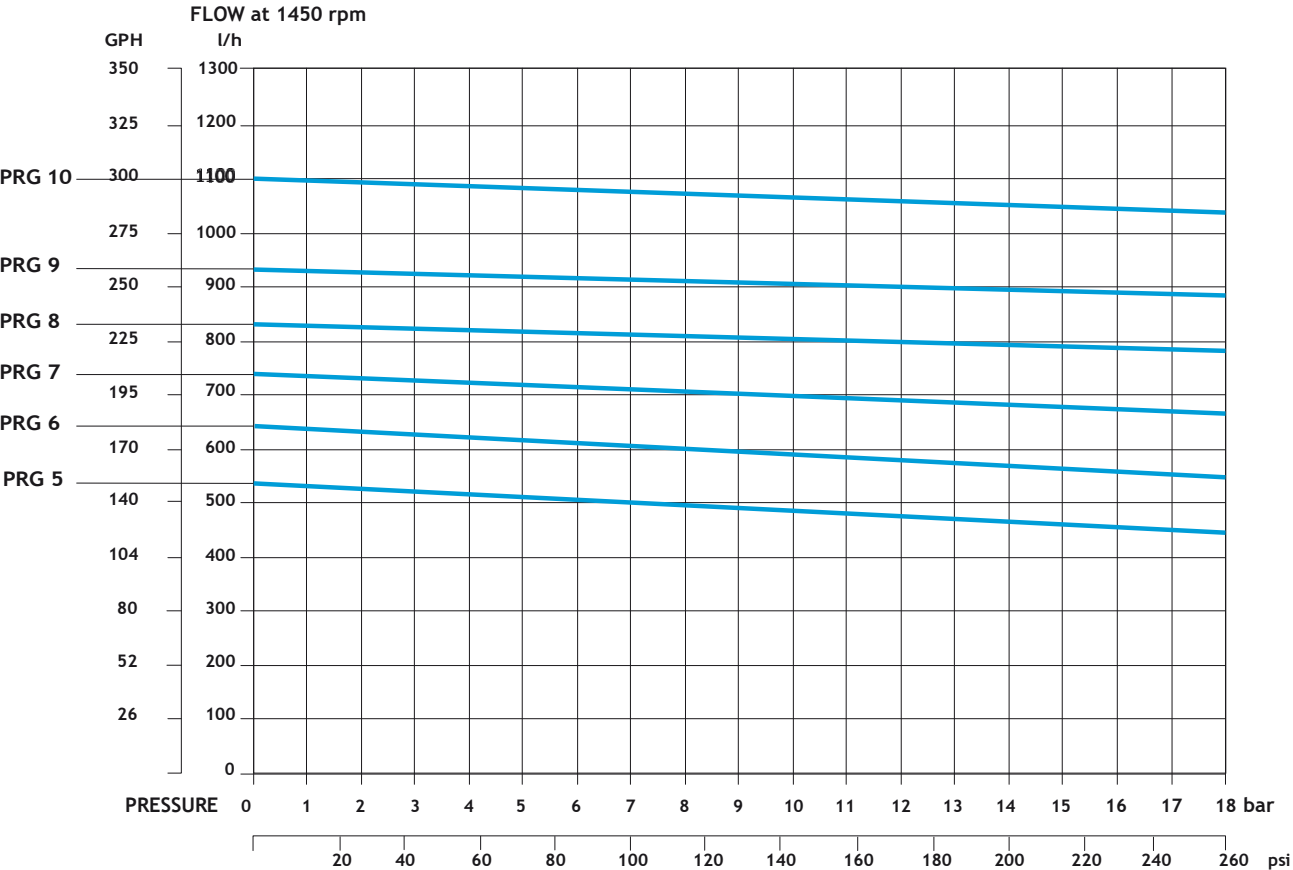
Available in brass or stainless steel, with or without bypass valve, with various types of seals (NBR, EPDM or FKM) and connections to the motor. Flow rates from 500 to 1,080 l/h, with pressures up to 18 bar. Can be combined with standard IEC 71, 80 or 90 motors or with motors with special 48 YZ connection<.

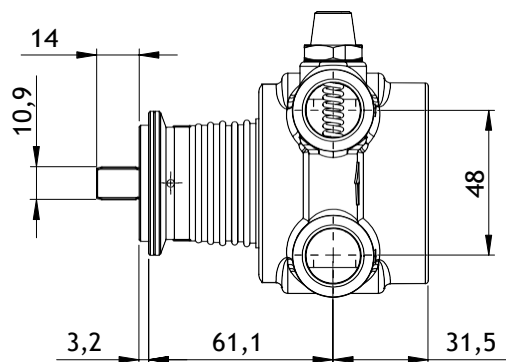
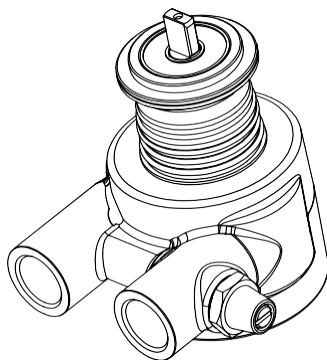
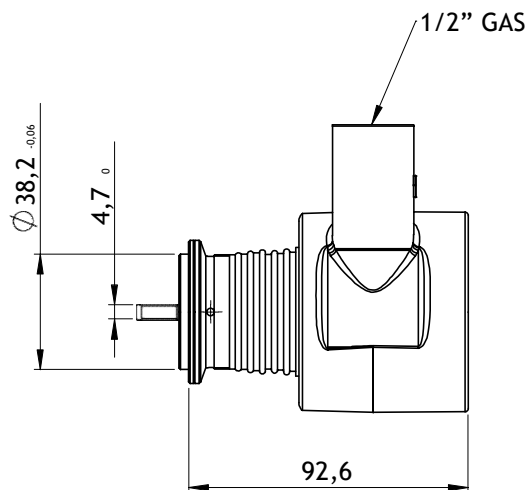
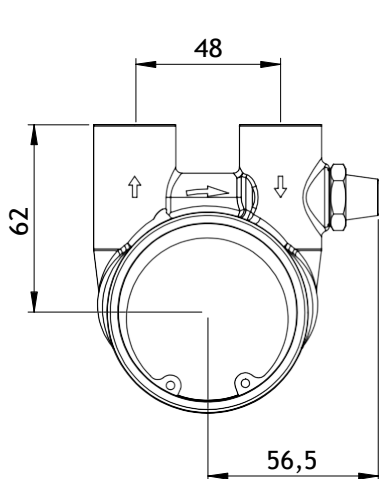


APPLICATIONS

- > Reverse osmosis
- > Water filtration and micro-filtration
- > Water, perfume or pesticide misting systems
- > Cooling circuits
- > Chemical mixtures

>CHARACTERISTIC CURVE PRG SERIES





PUMP CODE

serie PRG	portata (L/h) a 1400 rpm				portata (GPH) a 1750 rpm			
	0 bar	5 bar	9 bar	14 bar	0 psi	75 psi	130 psi	200 psi
PRG 5	535	510	490	475	174	166	159	155
PRG 6	640	620	590	575	208	202	192	187
PRG 7	730	715	690	675	238	233	225	220
PRG 8	830	815	800	780	270	265	260	254
PRG 9	930	920	905	880	303	299	295	286
PRG 10	1100	1080	1070	1030	358	352	348	335

Indicative flow rates referring to :
pump without bypass, motor with constant
speed at 1400 rpm, water at 20°C (68°F)

Indicative flow rates referring to :
pump without bypass, motor with constant
speed at 1750 rpm, water at 20°C (68°F)